

DST-36202M THRU DST-36224M



DST-36202M
■ DST-36202MSS



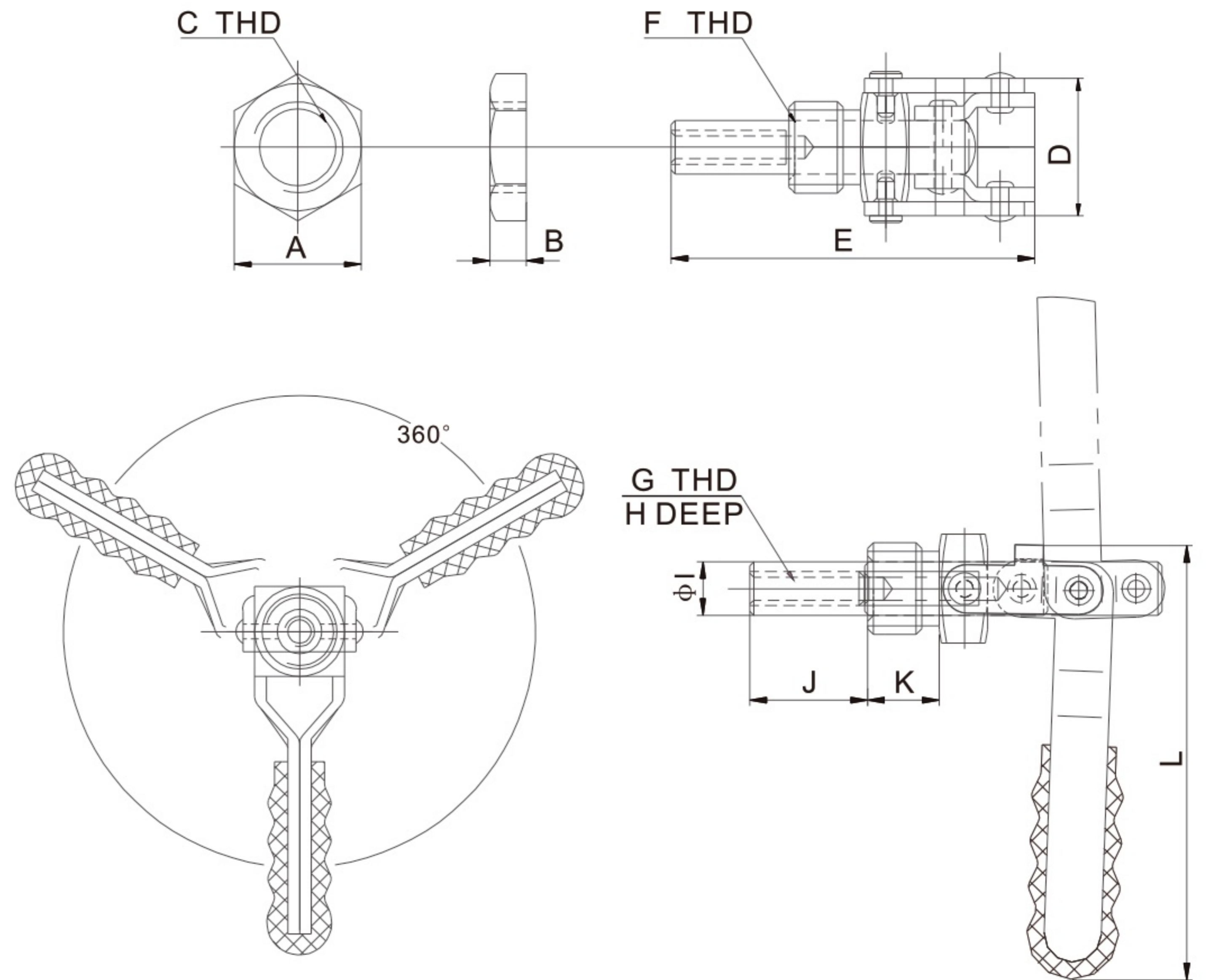
DST-36204M
■ DST-36204MSS



DST-36224M
■ DST-36224MSS

Material: Steel, the product with ■ mark is available in stainless steel.

MODEL	HOLDING CAPACITY(kgf)	WEIGHT (g)	SPINDLE SUPPLIED	PLUNGER STROKE(mm)	OPTIONAL MOUNTING BRACKET
DST-36202M	91	113	CH-SA-064010	20	DST-36203
DST-36204M	136	270	CH-SA-085012	39	DST-36205
DST-36224M	318	770	CH-SA-105015	65.5	DST-36225M
DST-36202M-SS	91	113	CH-SA-064010-SS	20	DST-36203
DST-36204M-SS	136	270	CH-SA-085012-SS	39	DST-36205
DST-36224M-SS	318	770	CH-SA-105015-SS	65.5	DST-36225M



DST-36225M

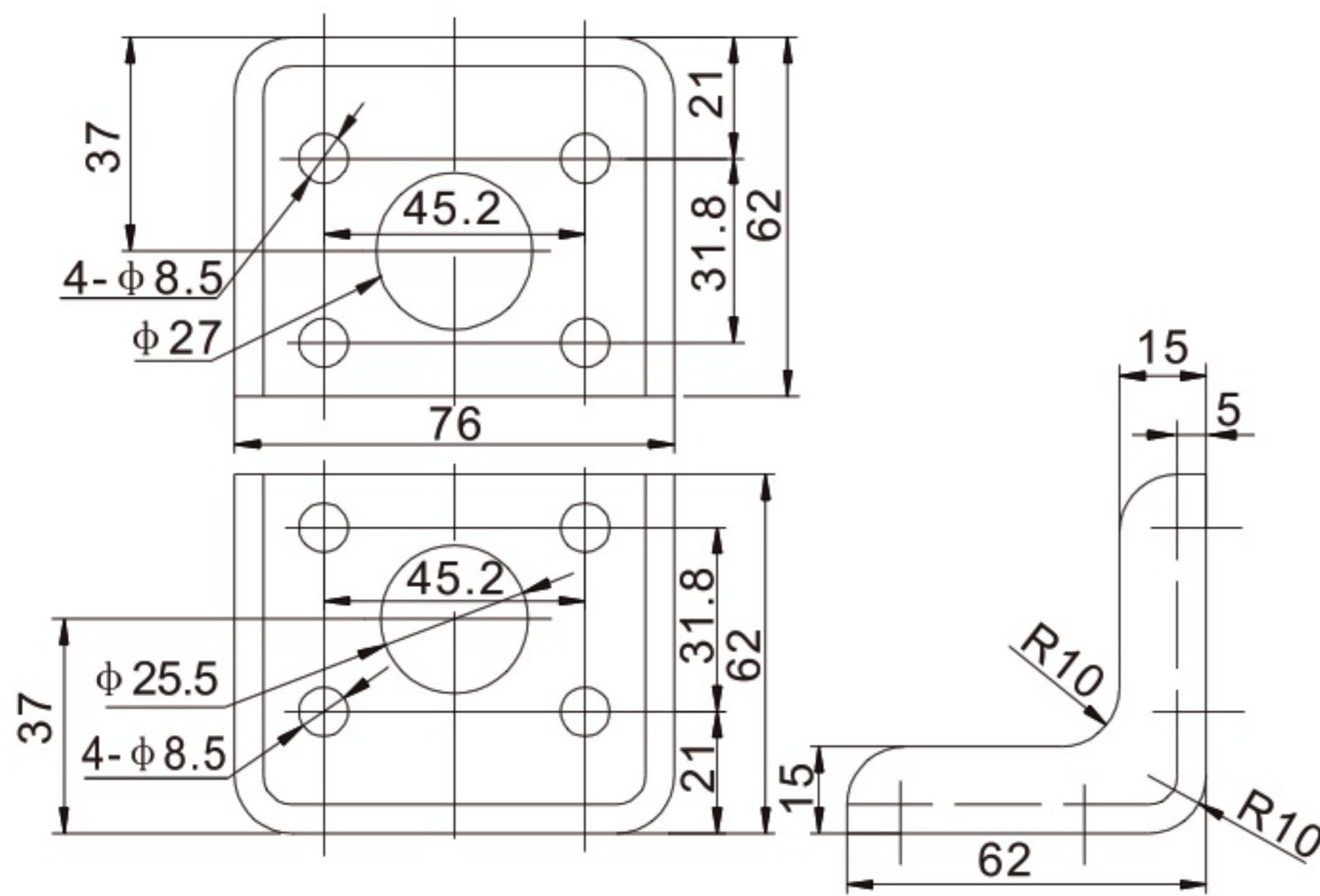


DST-36203



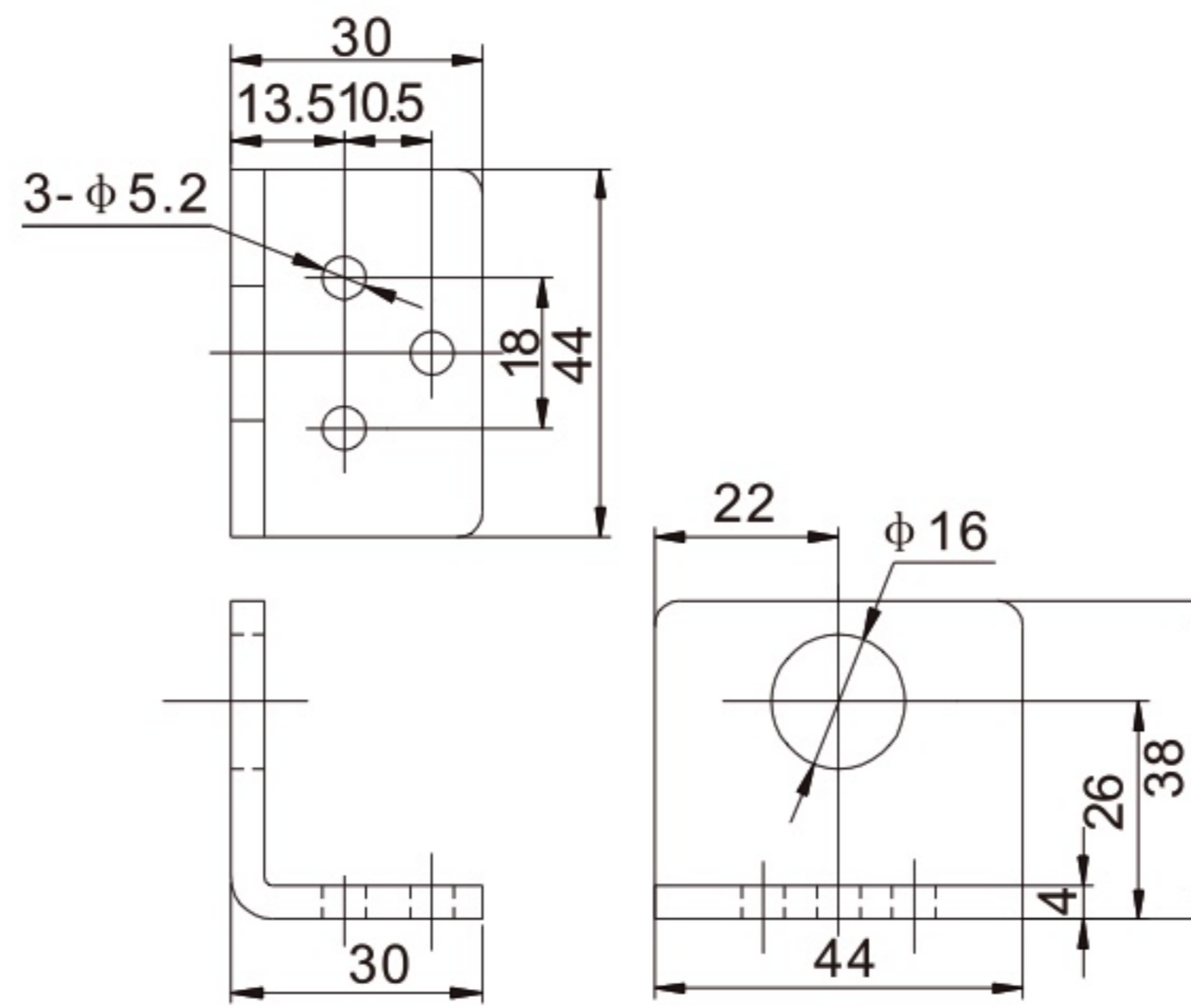
DST-36205

DST-36225M



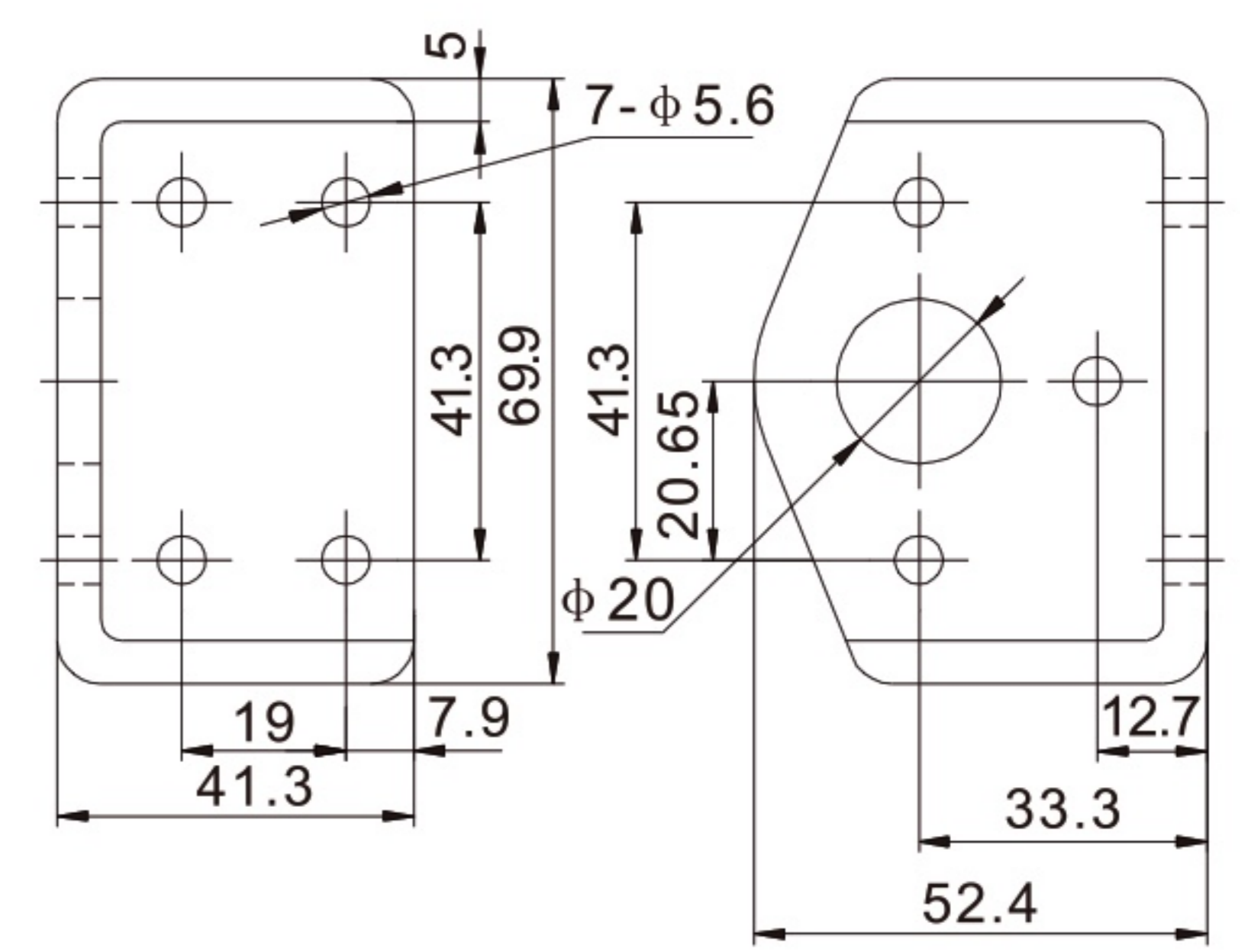
Unit:mm

DST-36203



Unit:mm

DST-36205



Unit:mm

Unit:mm

MODEL	A	B	C	F	D	E	G	H	ΦI	J	K	L Max.
DST-36202M	24	6.5	M16	P=1.5	24	63.5	M6 P=1	15.8	9.4	21	12.5	76
DST-36204M	30	6.5	M20	P=1.5	28.2	115	M8 P=1.25	25.4	10.9	40.5	15.9	101
DST-36224M	41	8	M27	P=2.0	40	169.6	M10 P=1.5	31.7	15.7	69	21.8	139
DST-36202M-SS	24	6.5	M16	P=1.5	24	63.5	M6 P=1	15.8	9.4	21	12.5	76
DST-36204M-SS	30	6.5	M20	P=1.5	28.2	115	M8 P=1.25	25.4	10.9	40.5	15.9	101
DST-36224M-SS	41	8	M27	P=2.0	40	169.6	M10 P=1.5	31.7	15.7	69	21.8	139

Installation instruction: This series clamps are installed with external thread.